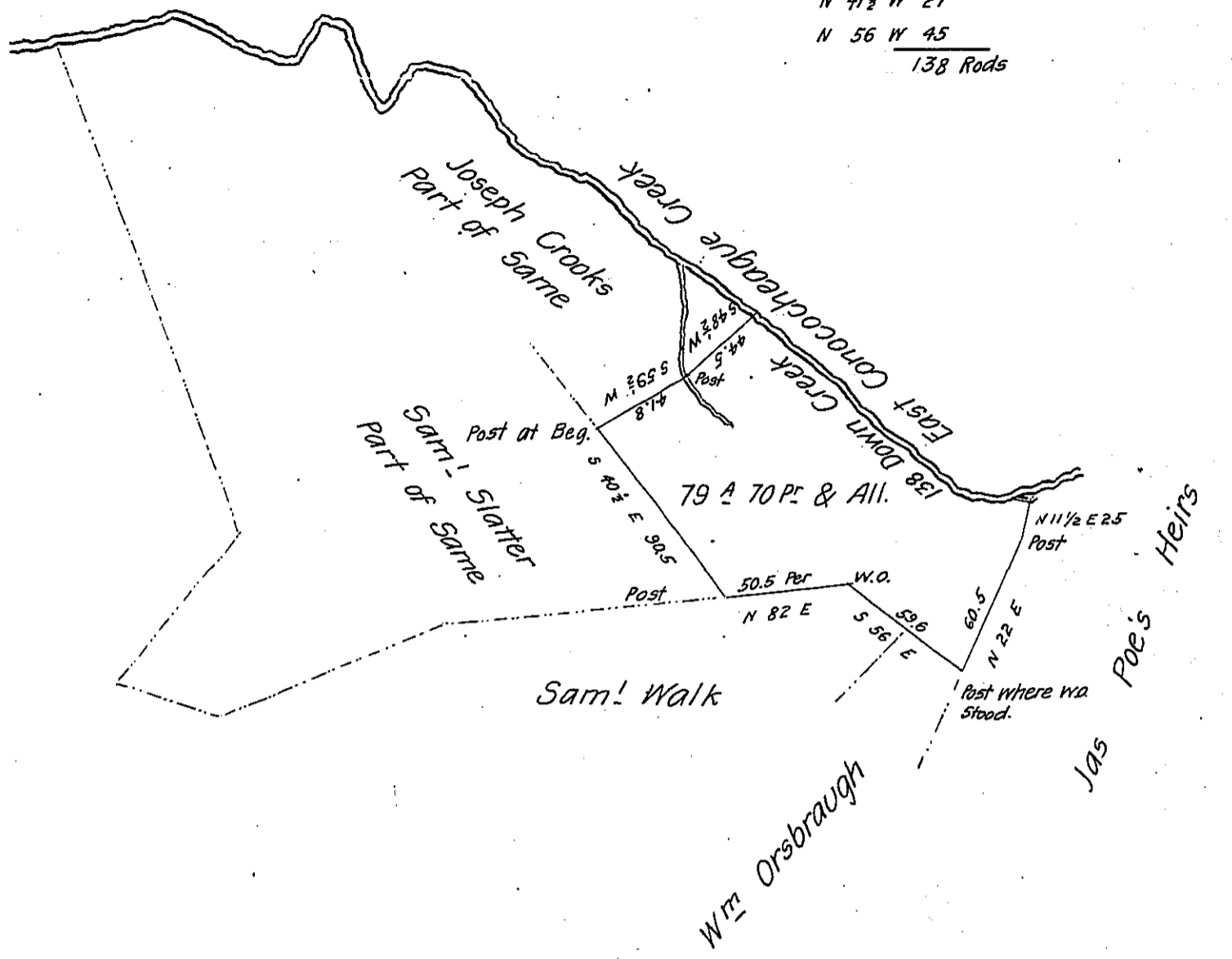


Courses down Creek  
 S 85 3/4 W 24  
 N 60 W 42  
 N 41 1/2 W 27  
 N 56 W 45  
 138 Rods



A Draught of a tract of Land Situate in Antrim Township Contair-  
 ing 79 Acres 70 Perches and allowance of 6 p<sup>r</sup> Cent for Roads &c. being part  
 of a larger tract of Land surveyed in pursuance of a Warrant granted  
 Christiana McClelland & Children bearing date November 26<sup>th</sup> 1766 Resur-  
 veyed the above part for Philip Steokr April 23<sup>rd</sup> 1840

Pr

Hugh Auld D.S.

To Jacob Sallade Esq<sup>r</sup>

Surveyor General of Pa.

IN TESTIMONY that the above is a copy of the original remaining on file in  
 the Department of Internal Affairs of Pennsylvania, made  
 conformably to an Act of Assembly approved the 16th day of  
 February, 1833, I have hereunto set my Hand and caused  
 the Seal of said Department to be affixed at Harrisburg,  
 this twenty ninth day of March 1906

*Loach A. Brown*  
 Secretary of Internal Affairs.